

Getting Creative With Trial Waste

Jena English

Vicki Mason, Samantha Millward, Mercy Nwashindi, Mei Ling To

Within all areas of clinical research, the management of sponsor provided laboratory supplies can present numerous issues to the staff co-ordinating the trial supplies and the organisation.

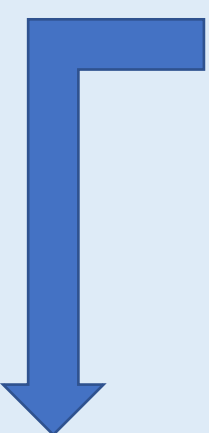
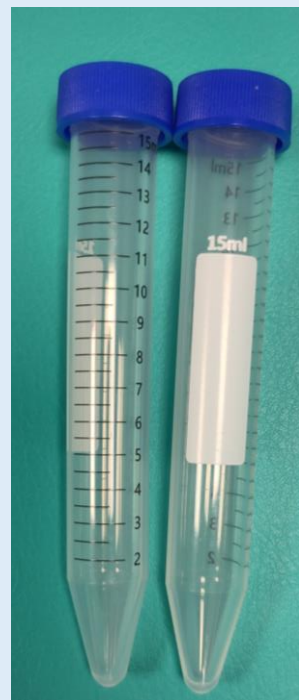
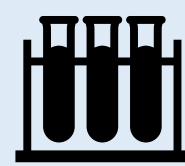
These issues include but are not limited to:

- finding suitable storage for the large number of kits provided by sponsor
- finding suitable ways to dispose of clinic items within these kits

Due to the high volume of clinical items we receive, most expire or are no longer required. This means a lot of equipment is wasted.

Since 2020 St James' Clinical Research Facility (CRF) have been trying to get creative with recycling the vast amounts of trial waste.

Historically all the items listed on this poster would have ended in LHTH's waste system, at a cost to the Trust!



If these aren't utilised by our labs, we have linked up with local schools to send our equipment to their science departments.

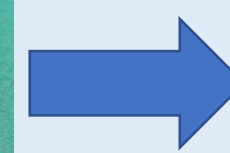
"Science school budgets have been significantly reduced in recent years. The equipment donated significantly helps enrich the students' practical learning elements."



Future Projects

- Inviting sponsors to discussions and review the amount of waste we have
- Liaising with sponsors and nominated labs to suggest ways of working more sustainably and help us meet both theirs and our own targets
- Finding other internal & external sources to utilise or recycle excess stock so that we are heading towards zero waste
- Develop a proposal for funding to have dedicated time / personnel to drive the initiative forward

If in date and trust compliant, excess/unused phlebotomy equipment is sent to phlebotomy teams for use

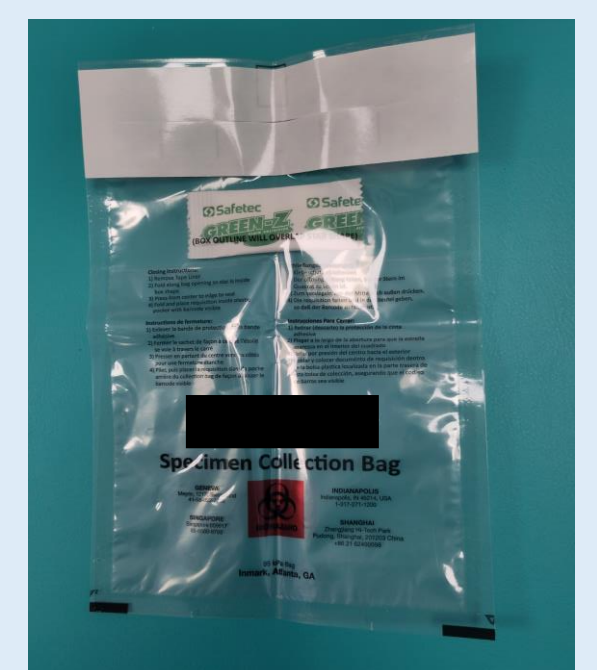
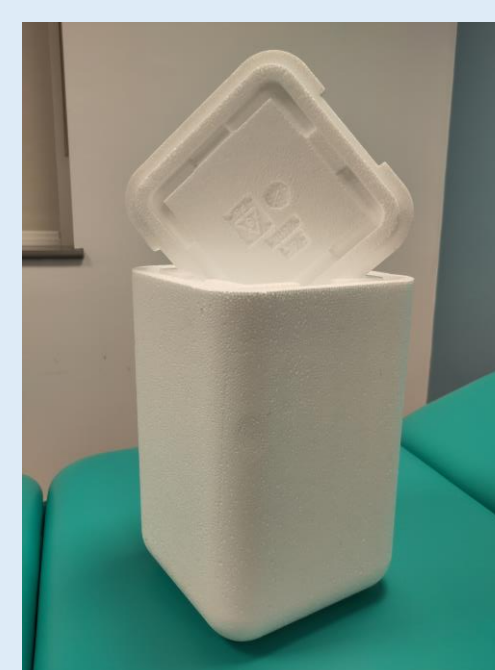
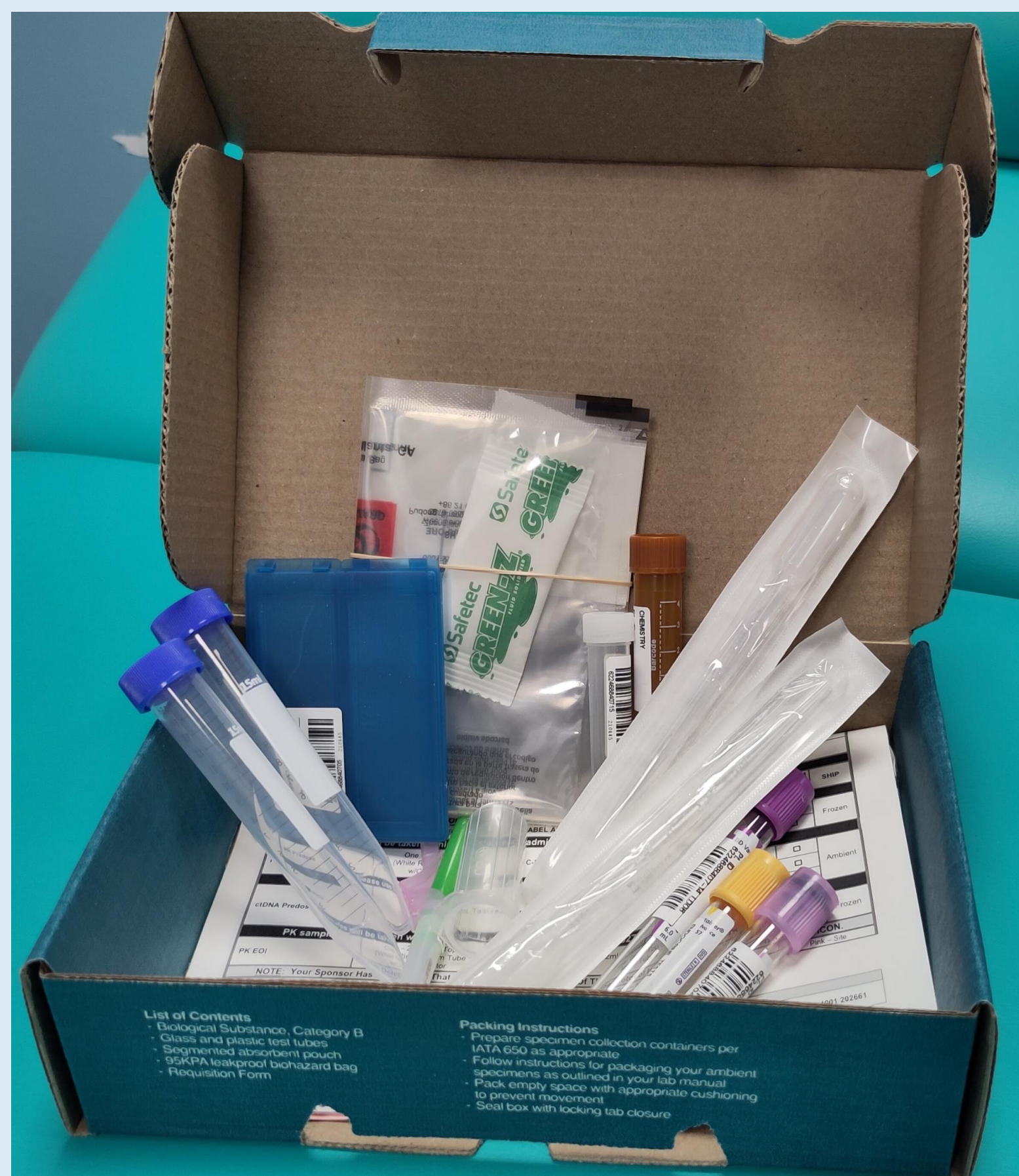


Out of date items are sent to LHTH Medical Education Teams to be repurposed for training and education

Since December 2024 we have saved **£2173.22**
 "The course that will be supported by the donations of this equipment are The B3 Development Programme, Excellence in You: Harm Free Care which is for allied health professionals learning specific clinical skills such as venepuncture.

They have also been used in our mock OSCEs for third year medical students and in our Simulated medical On call Simulation (SUMO) that is done with fifth year medical students, pharmacist students and ACP students."
 – Dr Sarah Campion, Speciality Doctor in Medial Education

Email sarah.campion1@nhs.net if you have any spare / unwanted clinical equipment



Despite our best efforts, we still struggle to recycle these items: **Polystyrene shipping boxes, aliquot/cryovial tubes, and specimen transport bags**

If anyone has suggestions of how we can recycle them or links to STEM University departments who would accept them, please scan the QR code at the bottom of the poster to let us know!

Recycling Kits Ideas Form



References:

- 1) Icon laboratory. 2025. Environment: Conducting business sustainably. <https://www.iconplc.com/about-icon/environmental-social-and-governance/environment>
- 2) IQVIA laboratory. 2024. Sustainability report. <https://www.iqvia.com/-/media/iqvia/pdfs/about-us/esg/iqvia-2024-sustainability-report.pdf>
- 3) Labcorp. 2023. CORPORATE RESPONSIBILITY REPORT. Creating a healthier world. https://www.labcorp.com/content/dam/labcorp/files/about/Labcorp_Corporate_Responsibility_Report_2023_Final%202_9.pdf
- 4) LHTH 2023. Green Plan and Decarbonisation Strategy. <https://www.leedsth.nhs.uk/about/trust/sustainability/green-plan-and-decarbonisation-strategy/>